

# FLEXIBLE SPACES AND MODULAR CONSTRUCTIONS



# 360° SERVICE

- OFFICES, ADMINISTRATION BUILDINGS AND BANKS
- CONSTRUCTION OFFICES AND ACCOMMODATION
- KINDERGARTENS AND SCHOOLS
- EVENTS, TRADE FAIRS AND EXHIBITIONS

**algeco**<sup>®</sup>  
An ALGECO SCOTSMAN Company

# WE CREATE SPACES SO THAT YOU CAN FOCUS ON WHAT IS IMPORTANT

FLEXIBILITY . FUNCTIONALITY . INDIVIDUALITY . COMPETENCY . CLOSE TO THE CUSTOMER . QUALITY . SECURITY . 360° SERVICE CONCEPT . SPEED . COMPETENCY

## 360° SERVICE FOR GREATER SECURITY AND COMFORT

Modular space solutions correspond with the modern times since the ability to react is one of the decisive factors of success in the global economy. Modular constructions for various work sectors, e.g. for project groups, development departments or service teams, will secure the capability of fast reactions for you and therefore, a long-term success as well.

Our main activity draws away from typical temporary containers at construction sites. We create fully-fledged comfort constructions with all-inclusive services.

We are the leading company in this area on the market and we play a significant part in the creation of new trends. As a complex provider of services, with 360° SERVICE, ALGECO sets the standards for exemplary service from one provider.

**For greater security and comfort!**

## OFFER OF SERVICE PACKAGES FOR BETTER SERVICE

It is not the office module itself that makes the workplace. Apart from basic furnishing, you chiefly need suitable technological infrastructure, such as networks and telephone. Air-conditioning is part of the today's standard as well. Of course, it is up to you, whether you submit electrician works, IT, air-conditioning, security technology or interior construction to different specialized companies. We will

be happy to support you with a suitable offer of service packages for attractive prices, for example:

- Offices, Administration and Banks, pages 6-7
- Construction sites, pages 8-9
- Schools, pages 10-11
- Pre-school facilities, pages 12-13
- Events, pages 14-15

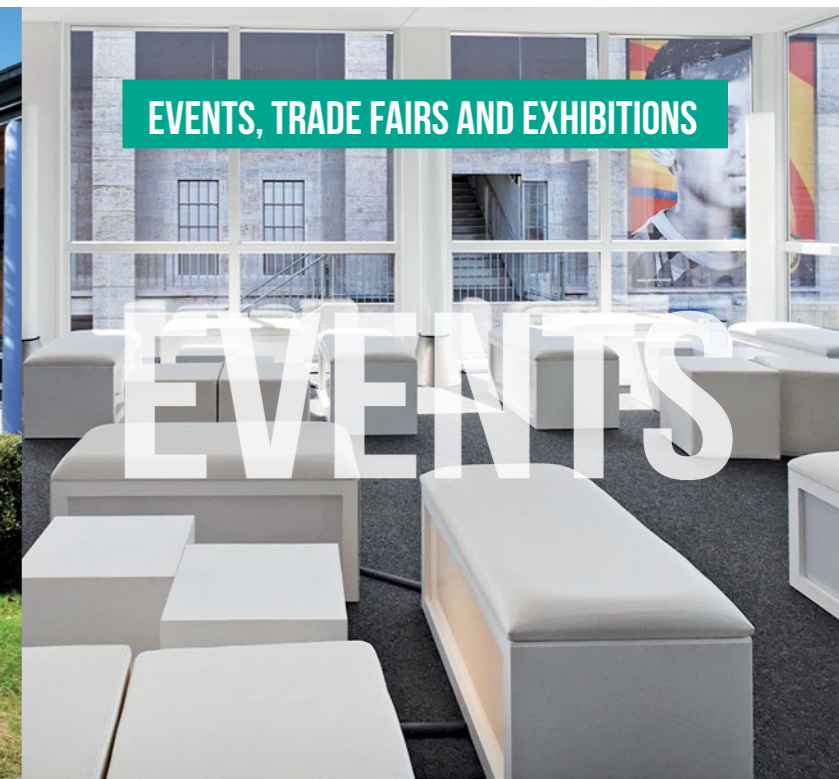
Upon ordering a turn-key construction, your building will be in a working order immediately after the handover! This way, you'll save valuable time which you would have otherwise spent by arrangements and you can immediately start your activities in the new premises.

OFFICES, ADMINISTRATION AND BANKS

CONSTRUCTION OFFICES AND ACCOMODATION

KINDERGARTENS AND SCHOOLS

EVENTS, TRADE FAIRS AND EXHIBITIONS



## FOR YOUR FLEXIBILITY

MODULAR CONSTRUCTION SYSTEMS ARE AS VERSATILE AS YOUR SPACE REQUIREMENTS: FROM A SIMPLE MODULE INTENDED FOR A SHORT-TERM LEASE UP TO A FULLY FURNISHED COMPLEX CONSTRUCTIONS FOR A LONG-TERM USE: WE WILL ALWAYS OFFER A SUITABLE SOLUTION FOR YOUR CONSTRUCTION PROJECT. WHETHER IT'S INDIVIDUAL OFFICES, WORKROOMS WITH GREATER STAFFING OR LARGE OFFICES – WITH OUR FLEXIBLE SYSTEM OF MODULAR SERIES, WE WILL ADJUST THE SIZE OF THE ROOMS ACCORDING TO YOUR REQUIREMENTS.

## TECHNOLOGY

## SECURITY

## PROJECT DESIGN AND EXECUTION

## CLOSE TO THE CUSTOMER / CONTACT NETWORK

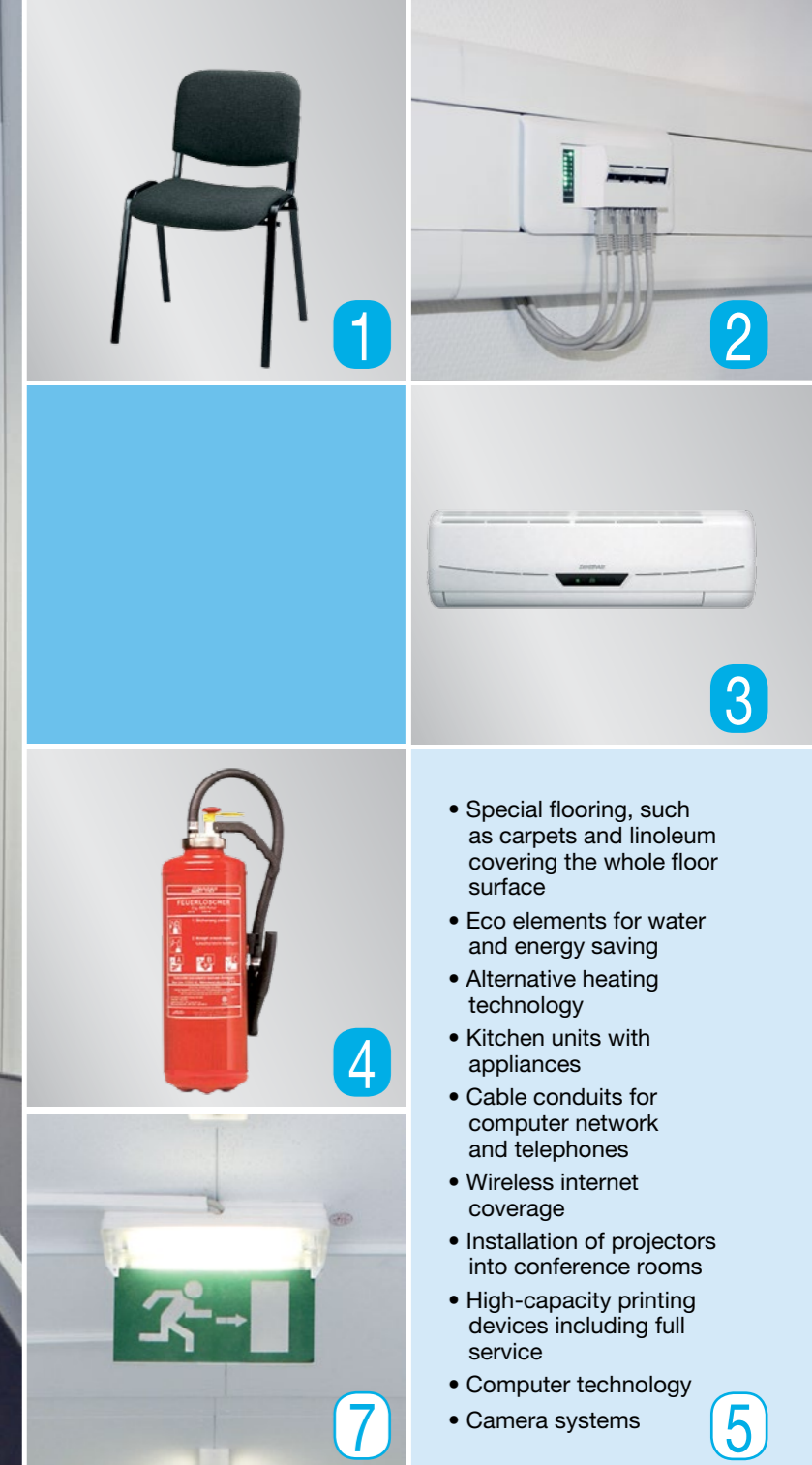
## YOU DETERMINE THE DEGREE OF CONSTRUCTION

BASED ON THE TREND OF HIGHER COMFORT AND ALL-INCLUSIVE SERVICES, WE ARE NOW ALSO OFFERING FULLY-EQUIPPED SPACES FOR WORK, STUDY, EXHIBITIONS, CONFERENCES AND EVENTS.

## DESIGN, COMFORT AND ECOLOGY

## CUSTOMER SERVICE





# WORKPLACES CONFIGURATION

## SERVICE PACKAGE FOR OFFICES, ADMINISTRATION AND BANKS

ORDER YOUR OFFICE TURN-KEY STYLE AND WE WILL PROVIDE A COMPLETED WORKPLACE WITH FURNISHING AND WITH TECHNOLOGICAL INFRA-STRUCTURE ACCORDING TO YOUR WISHES

### BASIC PACKAGE:

- 1 Ergonomic **furniture**
- 2 **DATA-NET-SERVICE:** Provision of infrastructure the connection of information technology both by cable or by special wireless technology
- 3 Including **air-conditioning** with a powerful splitting device
- 4 **Basic furnishing also includes: Fire extinguishers corresponding to the construction area**

- Basic Package
- Extended Offer

### EXTENDED OFFER:

- 5 Upon your wishes, along with basic workplace furnishing we will also supply **decorative elements, special devices or suitable technological equipment.**
- 6 Apart from our standard furnishing series, we also offer a collection of **premium furniture** for demanding clients.
- 7 With offices and administrative spaces, there are often increased requirements for security due to the public and visitors.

- Special flooring, such as carpets and linoleum covering the whole floor surface
- Eco elements for water and energy saving
- Alternative heating technology
- Kitchen units with appliances
- Cable conduits for computer network and telephones
- Wireless internet coverage
- Installation of projectors into conference rooms
- High-capacity printing devices including full service
- Computer technology
- Camera systems

That's the reason why the following security elements, for example, may be of relevance:

- Access Control
- Fire detector with timely fire detection
- System for fast and secure evacuation
- Safety and Escape lighting in case of an alarm

#### Due to insurance reasons, we recommend:

- Signalling technology in accordance with the Czech standards (alternatively with a connection to an existing system)
- Security cameras combined with banking recorders

# WORKPLACES CONFIGURATION



## SERVICE PACKAGE FOR CONSTRUCTION SITES

ORDER YOUR CONSTRUCTION OFFICE TURN-KEY STYLE AND WE WILL PROVIDE A COMPLETED WORKPLACE WITH FURNISHING ACCORDING TO YOUR WISHES AND WITH TECHNOLOGICAL INFRASTRUCTURE.

### BASIC PACKAGE:

- 1 Sturdy furniture
  - 2 **DATA-NET-SERVICE:** Provision of infrastructure for the connection of information technology both by cable or by special wireless technology
  - 3 **Air-conditioning:** according to possibilities and budget, with practical non-portable device or powerful splitting technology
- Basic furnishing also includes:**
- 4 **Fire extinguishers** corresponding to the construction area
  - 5 **A CEE socket and a connecting channel**
  - 6 Suitable **equipment** for conference rooms and clothes rooms

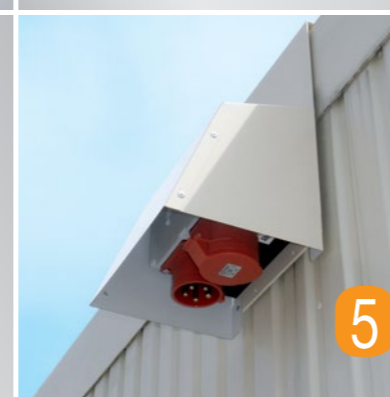
### EXTENDED OFFER:

- 7 Upon your wishes, along with basic workplace furnishing, we will also supply **decorative elements, special devices or suitable technological equipment.**
- 8 In the area of construction works, we count with increased requirements for operation security and data protection, especially in remote localities or also due to insurance reasons.

In these cases, the following **security elements** may be of relevance:

- Intrusion Detection Systems
- Access Control
- Fire detector as a house alarm, alternatively with a connection to a fire brigade
- System of security cameras

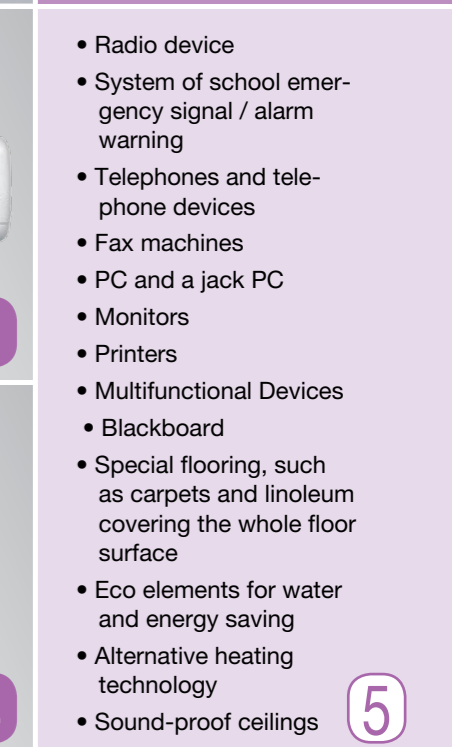
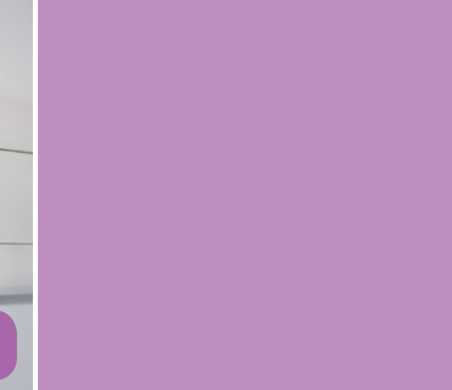
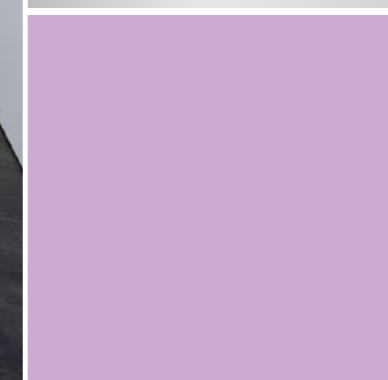
- Basic Package
- Extended Offer



- Special flooring, such as carpets and linoleum covering the whole floor surface
- Eco elements for water and energy saving
- Alternative heating technology
- Kitchen units with appliances
- Cable conduits for computer network and telephones
- Wireless internet coverage
- Installation of a projector into conference rooms
- High-capacity printing devices including full service
- Computer technology
- Camera systems

7

# CLASSROOMS CONFIGURATION



- Radio device
- System of school emergency signal / alarm warning
- Telephones and telephone devices
- Fax machines
- PC and a jack PC
- Monitors
- Printers
- Multifunctional Devices
- Blackboard
- Special flooring, such as carpets and linoleum covering the whole floor surface
- Eco elements for water and energy saving
- Alternative heating technology
- Sound-proof ceilings

## SERVICE PACKAGE FOR SCHOOLS

ORDER YOUR SCHOOL TURN-KEY STYLE AND WE WILL PROVIDE IT WITH FURNISHING AND TECHNOLOGICAL INFRASTRUCTURE ACCORDING TO YOUR WISHES.

### BASIC PACKAGE:

- 1 Sturdy furniture
- 2 **DATA-NET-SERVICE technology: Two seats in every classroom always fitted with two network connections, telephone lines and a double socket**
- 3 Air-conditioning with a powerful splitting device
- 4 Basic furnishing also includes: Fire extinguishers corresponding to the construction area

- BASIC PACKAGE
- EXTENDED OFFER

### EXTENDED OFFER:

- 5 Upon your wishes, along with basic workplace furnishing, we will also supply decorative elements, **special devices or suitable technological equipment.**
- 6 Schools are a sensitive area with high frequency of the public. This automatically implies increased security requirements. That's the reason why the following security elements, for example, may be of relevance:
  - Fire detector, alternatively with a connection to a fire brigade and with a sound alarm

- Security cameras for monitoring of the surroundings and identification of persons
- Sound system including ringing (alternatively with a connection to an existing system)
- Alarm in case of a threat with instructions and an emergency plan

# PRE-SCHOOL FACILITIES



## BASIC PACKAGE:

- 1 Configuration tailored to the comfort of children, especially in the area of **sanitary conveniences**
- 2 **DATA-NET-SERVICE technology:** Two PC seats in every playroom always fitted with network connections, telephone line and a double socket
- 3 **Air-conditioning** with a powerful splitting device
- 4 **Basic equipment also includes:**  
**Fire extinguishers** according to the area of the construction

## EXTENDED OFFER:

- 5 Upon your wishes, along with basic workplace furnishing, we will also supply **decorative elements, special devices or suitable technological equipment.**
- 6 Pre-school facilities have their own individual character and according to our experience, they don't allow for any compromises. That's why we recommend **individual consultation of furnishing** with our team of specialists.
- 7 Pre-school facilities are a sensitive area with high frequency of the public. This automatically implies increased security requirements. That's the reason why the following security elements, for example, **may be of relevance:**
  - Fire detector, alternatively with a connection to a fire brigade and with a sound alarm
  - Security cameras for monitoring of the surroundings and identification of persons
  - Electronic systems with safety locks on the doors (to prevent the children from running away)

## SERVICE PACKAGE FOR PRE-SCHOOL FACILITIES

ORDER YOUR PRE-SCHOOL FACILITY TURN-KEY STYLE AND WE WILL PROVIDE IT WITH FURNISHING ACCORDING TO YOUR WISHES AND WITH TECHNOLOGICAL INFRASTRUCTURE.



1



2



3



4



7

- Special flooring, such as carpets and linoleum covering the whole floor surface
- Eco elements for water and energy saving
- Alternative heating technology
- Kitchen units with appliances
- Telephones and telephone devices
- Fax devices
- PC and jack PC
- Monitors
- Printers
- Multifunctional devices

5

- Basic Package
- Extended Offer

# CONFIGURATION FOR EVENTS



## SERVICE PACKAGE FOR EVENTS

ORDER YOUR PREMISES FOR VARIOUS EVENTS AND EXHIBITIONS TURN-KEY STYLE AND WE WILL DELIVER THEM TO YOU ALONG WITH FURNISHING AND TECHNOLOGICAL INFRASTRUCTURE ACCORDING TO YOUR WISHES.

### BASIC PACKAGE:

- 1 **DATA-NET-SERVICE technology:**  
Two seats in every room always fitted with two network connections, telephone line and a double socket
- 2 **Air-conditioning** with a powerful splitting device
- 3 **Basic furnishing also includes:**  
**Fire extinguishers** corresponding to the area of construction

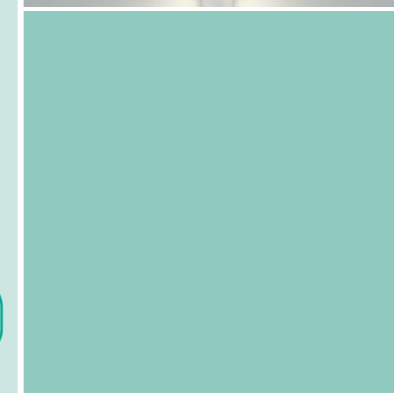
### EXTENDED OFFER:

- 4 Upon your wishes, along with basic workplace furnishing, we will also supply **decorative elements, special devices** or suitable **technological equipment**.
- 5 For furnished exhibition premises, we would like to offer you our modern **collection of premium furniture**. We will set up the configuration together with you according to your requirements.
- 6 With events, there are often increased requirements for security due to the public and visitors. That's the reason why the following security elements, for example, **may be of relevance:**
  - Access Control
  - Fire detector with timely fire detection
  - System for fast and secure evacuation
  - Safety and escape lighting in case of an alarm

■ BASIC PACKAGE  
□ EXTENDED OFFER



- Special flooring, such as carpets and linoleum covering the whole floor surface
- Eco elements for water and energy saving
- Alternative heating technology
- Kitchen units with appliances
- Telephones and telephone devices
- Fax devices
- PC and a jack PC
- Monitors
- Printers
- Multifunctional devices





# PROJECT DESIGN AND EXECUTION



“ ARRANGEMENTS AND DEALING WITH THE AUTHORITIES... ”

## AT THE START, THERE IS A QUALITY PROJECT

Success of a project stands and falls with professional planning.

In the project design phase, we are going to support you with **typical services of architects and engineers**, which - besides other things - includes:

- Concept, project and planning
- Cost calculation
- Layouts and construction design

Don't exert yourself and leave the preparation of necessary expert opinions and documents for dealing with the authorities up to us!

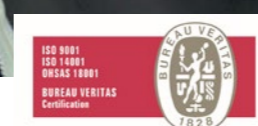
We like to build **turn-key constructions** including:

- Underground, modular and electrification works
- Cold and hot water installations
- Security installations

We **guarantee professional execution** by taking over of the **performance of the construction guarantor**, such as:

- Responsibility for site management
- Coordination of health and safety at work

CONSTRUCTED WITHIN MINIMAL TIME AND WITH FULL CONTROL OF COSTS



## PREPARATION OF THE CONSTRUCTION SITE AND ASSEMBLY

Preparation of the construction site is also included in the carefree package:

Together with our service partners, we will be happy to provide:

- Fencing of the construction site
- Electric current and water supply to the construction site
- Chemical toilets
- Foundations under the containers
- Inspection and takeover of electronic devices at the construction site
- and much more

Thanks to our own specialists, we guarantee expert assembling. Our system of management and health and safety meets the criteria for systematic and effective work safety in accordance with the requirements of OHSAS 18001-2007.

Apart from these, for works according to special safety standards, we are offering the following:

- Assemblies in accordance with the SCC certification system
- Well-proven and reliable employees for deployment in security areas (e.g. nuclear power plants)

CAREFREE AND COMFORTABLE PLANNING AND ORGANIZATION OF THE PROJECT.

- Static calculations
- Calculations for energy saving
- Certificates of fire and sound protection
- Expert examination of subsoil
- Arrangement of permits



# CLOSE TO THE CLIENT / CONTACT NETWORK

“ CLOSENESS TO THE CLIENT IS OUR ADVANTAGE! ”



## NETWORK OF OUR CONTACTS

Owing to a decentralised structure both in the Czech and Slovak Republic, we are your strong partner directly in your region or close by. Short distance from your construction project, proximity of larger cities and knowledge of local construction regulations play a major part in our consulting qualities and optimal customer care.

Among the reasons of ALGECO's success in deliveries of flexible, short-term and accurate constructions within the scheduled time period belongs the following:

- The size of our own fleet
- Seven branches on the territory of the Czech and Slovak Republic
- Professional distribution

FOR YOUR RELIABLE PLANNING.

Owing to our leading position on the global market, we are your ideal partner even for business abroad.

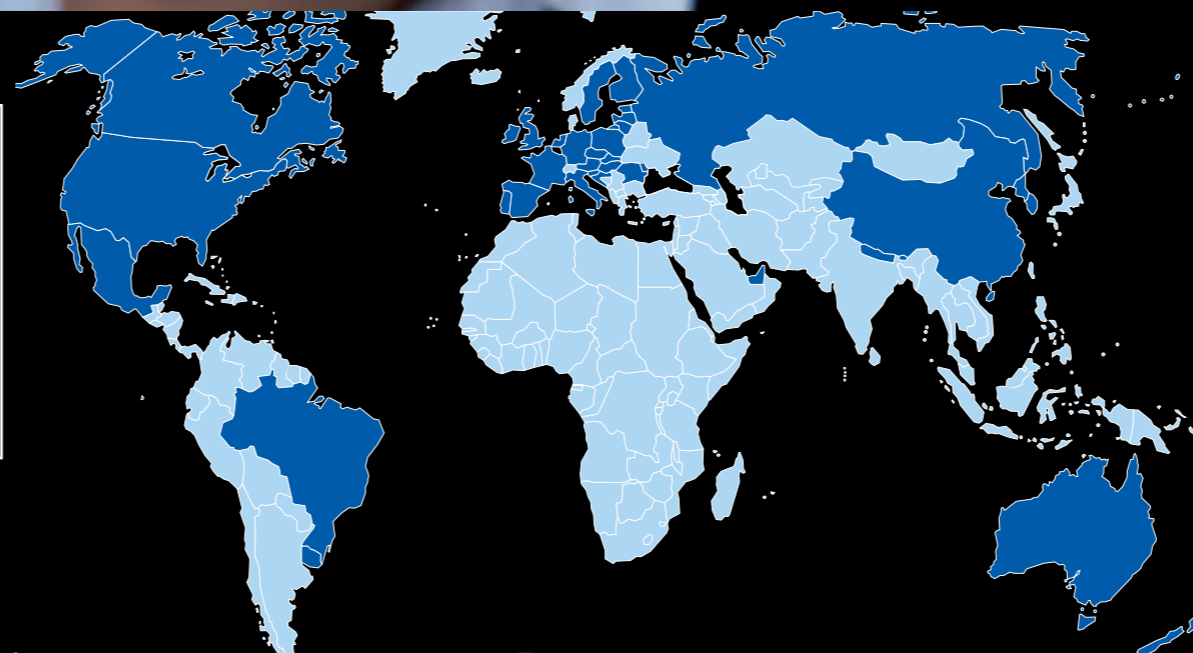
On your behalf, we'll take over the arrangements of the project in Czech or Slovak language, and we'll coordinate the services of ALGECO directly in the requested country.

We are offering:

- International network of contacts in more than 25 countries
- Specialized department for international project management

As an international service provider, ALGECO guarantees the conformity with the corresponding building code of the country, taking local provisions into account as well.

MORE THAN 25 COUNTRIES



# DESIGN, COMFORT AND ECOLOGY

MODERN  
DESIGN

## DESIGN, COMFORT AND ECOLOGY

Have you got extraordinary demands on design, comfort and environmental-friendliness of the construction? There are no limits to your requirements. Upon request, we will create an excellent atmosphere in the room:

- Special flooring, such as carpets and linoleum covering the whole floor surface
- Eco elements for water and energy saving
- Heating technology for a pleasant feeling
- Sound-proof ceilings

We're successful even when it comes to design. The following architectonic elements will easily change modular configurations into constructions with the character of a classical building:

- Attics
- Superstructures on facades and roofs

Many from these furnishing parts and decorations will naturally pay off in the case of a longer use.

For optical enhancement of your temporary construction, we recommend **ALGECO DECO**.

Make a signboard out of your facade! Transform one or more of the walls using decorative sheets. Your colours or your logo will make a perfect advertisement out of the sheets. Together with you, we will carry out your designer ideas.

## FOR OUR ENVIRONMENT, COMFORT AND DESIGN

“ ECOLOGICALLY AND CREATIVELY ”

## FOR OUR ENVIRONMENT, COMFORT AND DESIGN

- Door closers
- Grid lights
- Movement detectors
- Spatial thermostats
- Flow heaters
- Renewable heating technology such as pellets or heat pump

- Gas and warm water heating
- Automatic sink batteries
- Self-closing batteries
- Water-free urinals
- Electric hand dryers
- and much more



# DESIGN OF WINDOWS AND FACADES

## DECORATIVE SHEETS FOR BUILDING FACADES

Owing to ALGECO DEKO, the facade of your building will become your signpost. Transform one or more of the walls individually using decorative sheets. Your colours or your logo will make a perfect advertisement out of the sheets.

### PRODUCT PROPERTIES

- Decorative sheets on side walls or on the front face mounted with Velcro
- Individual design according to the wishes of the client and the printed template
- For external use, UV stable in the long term

### PLUS POINTS

- Visually enhanced facade of the building will underline your presentation
- Attractive and cost-effective advertising surface is sure to catch attention

### OUR SERVICE FOR YOU

- Upon request: creation of a template for print following your submission (motive, design)
- Production of sheets
- Assembly on the spot

### TIP:

Compare costs of the ALGECO DEKO solution with costs of a large-scale advertising and judge the value of advertisement using a sheet installation by yourself!



## FOIL FOR SHADING AND FOR HEAT PROTECTION

Whether it will be a protection against the sun or heat in the offices or protection against a break-in in case of window spaces: owing to foils, we are able to offer you a solution for your protection and security made to measure.



## DESIGN OF THE FACADE

With public buildings, it pays off to choose an individual design concept for facades. We'll be happy to discuss the various options with you. Three examples of projects an illustration.

PROJECT:  
KINDERGARTEN



**MAIN DESIGN ELEMENTS:**

- Facade from larch wood, light spaces thanks to grand-scale window front faces.

PROJECT:  
OFFICE BUILDING



**MAIN DESIGN ELEMENTS:**

- Suspended two-colour facade with cold roof, aluminium front door and interior door made entirely of glass.

PROJECT:  
OFFICE AND RETAIL SPACES



**MAIN DESIGN ELEMENTS**

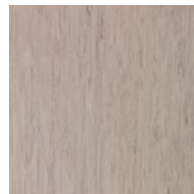
- Roofed space above the entrance, suspended facade, glassed dipterous front door, backlit rooms thanks to grand scale window surfaces.

# FLOORING

Apart from the appearance which is important for a pleasant feeling from the room, it is also the specific requirements on volume, slip-resistance or material which play a role. Standard homogenous IN flooring stands out with its extraordinary volume. Floors in our higher production line ADVANCE PLUS, with elegant wooden décor, already establish a completely different criteria when it comes to design.

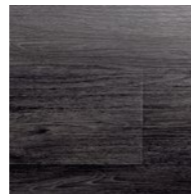
And finally, you can choose a design of the most high-quality flooring in the PROGRESS production series, especially the appearance of material and décor.

## IN FLOORING



**Standard flooring**  
Plastic

## ADVANCE PLUS FLOORING



**Standard flooring**  
Plastic with imitation of wood

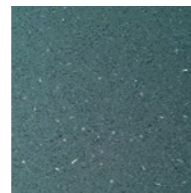
## SPECIAL FLOORING

Apart from the standard, we will naturally fit your building with special flooring that you will request.

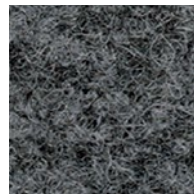
Here are some examples:



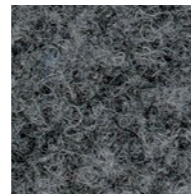
**Safestep-R11**  
82732 (grey)



**slip-resistant flooring**  
82892 (green)



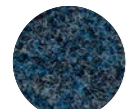
**Special solutions**  
Fulda Fit textile flooring,  
61 grey



**Special solutions**  
Textile flooring,  
61 grey



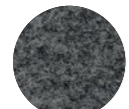
57 ocean



51 blue



52 sky-blue



61 grey



16 coral



85 mint green



63 anthracite



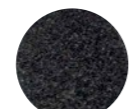
90 granite grey



91 basaltic



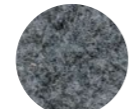
66 graphite



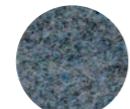
69 black



63 anthracite



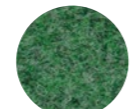
61 grey



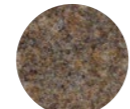
58 blue-grey



11 strawberry red



87 wicker green



29 dark beige



37 beige

Colour card
















Colour card

” FLOORING HAS A DECISIVE INFLUENCE ON THE SENSE OF SPACE. ”








# FURNITURE

According to the area of use, we will set up an optimal offer of furnishing and equipment for your modular construction: apart from simple, functional furniture for construction offices, residential or accommodation containers, the palette of our offer also consists of quality furnishing for modern office and administration buildings.

## STANDARD FURNITURE

			
<b>Office swivel chair</b> Product no. 42 Upholstered, adjustable height, 5 wheels	<b>Upholstered chair</b> Product no. 43 Steel construction, upholstered seat and backrest	<b>Shell chair</b> Product no. 46 Stackable shell chair made out of unbreakable plastic	<b>Steel wardrobe</b> Product no. 11 W 50 x D 50 x H 180 cm double-door, closet rod and a clothes hook
			
<b>Steel filing cabinet</b> Product no. 23 W 80 x D 38 x H 178 cm, Double-door, 1 storage space, 1 closet rod, 3 shelves	<b>Steel filing cabinet</b> Product no. 24 W 80 x D 38 x H 120 cm Double-door, 2 shelves	<b>Steel filing cabinet</b> Product no. 25 W 80 x D 38 x H 178 cm Double-door, 4 shelves	<b>Roll container with central lock</b> Product no. 16 W 46 x D 60 x H 62 cm 3 sockets
			
<b>Writing desk combination</b> Consists of an office desk and a roll container	<b>Office desk</b> Product no. 31 or no. 32 W 60 x L 120 x H 75 cm or L 160 25 mm coated work desk	<b>Fridge</b> Product no. 71 Volume 92 l	<b>Kitchenette combination</b> Product no. 73 Consists of a cooktop, sink, fridge and a boiler
			
<b>Foam mattress</b> Product no. 31 W 90 x L 190 x H 8 cm Due to sanitary reasons, mattresses are for sale only.	<b>Metal bed</b> Product no. 61d W 90 x L 190 cm, possible to spread out also into two individual beds, frame covered in wire mesh	<b>High endurance storage rack</b> Product no. 40 W 440 x D 60 x H 200 cm, with four shelves, Shelf load bearing capacity: 1.040 kg	

## PREMIUM FURNITURE\*

			
<b>Office swivel chair</b> Product no. P42 High adjustable backrest, adjustable armrests & synchronous mechanism	<b>Conference chair</b> Product no. P43 Chrome plated flexible base, textile upholstery and plastic perforated backrest, stackable	<b>Table</b> Product no. P31 nebo P32 W 80 x L 160 cm or L 180 cm, Aluminium-coloured base, adjustable in height with built-in channel for cables, melamine desk with maple imitation	<b>Coat hanger</b> Product no. P907 8 clothes hooks and umbrella stand, black
			
<b>Office container on wheels</b> Product no. P16 1 drawer for A4 files, 1 regular socket & 1 drawer for suspension files, upper desk from imitation of maple wood	<b>Rolling door cabinet</b> Product no. P116 W 45 x L 120 x H 105 cm, 2 storage spaces, plastic rolling doors	<b>Combined AP kitchenette made of noble steel with a glass ceramic desk</b> Product no. of AP combined kitchenette Consists of a glass ceramic desk, sink, fridge and a boiler	

\* Complete product catalogue at [www.algeco.cz](http://www.algeco.cz)



# PROJECT AND SPECIAL FURNISHING

## INTERIOR FURNISHING FOR PRE-SCHOOL FACILITIES

Pre-school facilities have their own individual character and according to our experience, they don't allow for any compromises. That's why we recommend individual consultation of furnishing with our team of specialists. Based on the following examples, you may get the idea about the variety of possibilities (examples of furnishing from the offer of products by the Wehrfritz company):



### Changing dresser

Dresser with drawers and a changing desk, safety stepladder, space for storage, suspension shelves

### Kid's corner

Varnished wooden modular parts, children kitchenette, miniature sofa

### Racking system

Side parts, drawers, closet door, shelves, parts for mounting

### Wardrobe with a bench

Shoe shelf, sitting and storage space, suspension cupboards, shelves, chairs on wheels

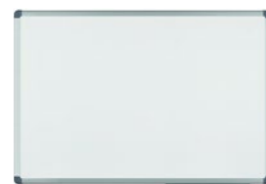
## SPECIAL FURNISHING FOR SCHOOLS

Of course that even schools have their special requirements. Here is a selection of interesting furnishing elements as an example:



### Wing lifting blackboard

with storage surface and sponge holder



### Whiteboard

magnetic board for writing, intended for dry wiping, with movable storage container



### Bench with a shoe shelf



### Wardrobe with a bench and hangers



### Double-wardrobe with a bench

Hangers and shoe shelves

All the depictions are intended for illustration only and they may slightly vary from the original, as well as the stated dimensions may.

## KITCHEN UNITS

Requested kitchen elements may be combined differently according to necessity. Because of this, you may extend the kitchen counter at will, or shorten it. The following examples depict the various possibilities (furnishing examples from the product range of the PINO company):



(FOTO / ZDROUJ: ALINDO AG)

Wall and lower cupboards, built-in fridge and sink

4 wall and lower cupboards, 1 high closet, stainless steel and dishwasher, built-in stove with cooktop and oven, fume hood, built-in fridge with freezer compartment

6 wall and lower cupboards, 1 high closet, stainless sink and dishwasher, built-in stove with cooktop and oven, fume hood, built-in fridge, freezer

## SANITARY STARTING PACKAGES

For a smooth start in a new building, essential furnishing may not be missing in the sanitation area such as objects of daily use and expendable supplies. Here, ALGECO is offering a special service: upon request, we will supply a suitable starting package for any type of a sanitary container.



### Sanitation starting package BASIC

- "ECO" Soap 300 ml, including mounting\*
- Toilet paper, whitened, 3layer
- Standing toilet brush, white
- Dispenser for folded paper towels, white
- Litter bin, round, 18 l, black



### Sanitation starting package PLUS

- "ECO" Soap 300 ml, including mounting\*
- Toilet paper, whitened, 3layer
- Standing toilet brush
- Pedal litter bin, stainless steel, 4 l

\*Upon request, soap may be subsequently re-ordered from ALGECO (packaging unit 30 pieces / box).



All the depictions are intended for illustration only and they may slightly vary from the original, as well as the stated dimensions may.

# TECHNOLOGY

“ MORE COMFORT WITH EASE ”



## COMFORT THROUGH TECHNOLOGY.

With the growing popularity of modular constructions in various sectors, the technological requirements placed on them are becoming much more complex.

In offices, schools or pre-school facilities today, implementation of information technology is a standard.

Thanks to our service for DATA-NET-SERVICE, we are offering a perfect solution, so that even in container constructions, you can get online fast and without any trouble while remaining flexible at the same time! If you wish to have a comfortable wireless internet coverage, we can offer you a well-proven and stable system of an intelligent Wi-Fi solution. Upon request, we will also provide the most cutting-edge technology of optical threads for wide coverage and for highest possible protection against failures and breakdowns.

**FOR YOUR FLEXIBILITY.**



## A WELL-CONSIDERED PLEASANT CLIMATE

Air-conditioning belongs all the more often to the standard furnishing of buildings. According to your needs and financial possibilities, we will provide portable air-conditioning devices or air-conditioning .with a powerful splitting technology.

Pleasant working atmosphere in the room is, apart from climate, to a great extent influ-

enced also by correct lighting. We will provide a quality lighting according to your wishes, that is tailor-made lighting.

Contact us even in case you are missing some technological equipment. We will be happy to provide requested communication and office technology including telephones, computers and printers!

**FOR GREATER COMFORT**





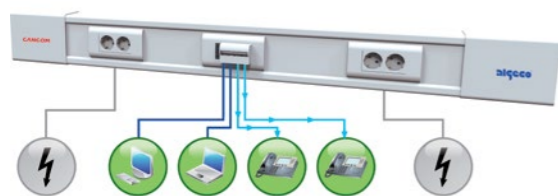
# SERVICE FOR DATA-NET-SERVICE

## MODULAR COMMUNICATION AND IT SOLUTION

Owing to the DATA-NET-SERVICE technology, we are offering modular energetic and communication power supply for an effective workplace solution – developed specially for use in modular constructions. Modular constructions ensure applicability of the system even in case of a replacement or connection of other modules.

### PRODUCT PROPERTIES

- Structured cabling of the highest quality
- Professional cabling of the CAT 6 category, designated for distribution of computer telecommunication networks with maximum transfer speed of 10 GB/s
- Structured cabling forms are an essential element of infrastructure of computer networks that is necessary for all modern industrial constructions, congress centres, administration buildings, banking houses, schools, etc.
- Cabling system created in accordance with the European norm EN 50173, that is the international norm ISO/IEC 11801, enables transfer of digital or analogue signal, most frequently to connect the computers to a LAN network, to connect telephones and to transfer signals of the IP protocol and for connection of numerous other technologies, such as, for example, wireless hotspots (Wi-Fi), IP CCTV cameras, various security systems, etc.
- Part of every delivery of structured cabling is also the handover of measurement reports.
- In our deliveries, we guarantee transfer quality, high transfer speed (up to 10 GB/s) and also high physical durability.



### INTELLIGENT WIRELESS SOLUTION

- We are offering coverage of your system with intelligent controlled Wi-Fi signal for concurrent work of more users and different devices.
- The solution enables automatic takeover of coverage among installed devices so that the signal will be provided from the currently strongest source.
- Individual Wi-Fi network connection spots are interconnected with cabling of the CAT 6A category.
- Suitable placement of individual devices and selection of antenna types is dealt with during assembly on site, based on current measuring, so that interference caused by iron construction of the system is eliminated.

### WHAT WE'LL PROVIDE FOR YOU

**Along with our service partner, the company FIRMADAT s.r.o., we will design the most suitable solution according to your requirements:**

- Consulting services on site
- Concept
- Installation

### ADVANTAGES

- Guarantee of a fixed contractual price
- Fast and professional assembly
- Possibility of guaranteed servicing on arranged times in the course of entire duration of a contract

# STRUCTURED CABLING

If you prefer regular cable connections, we will work it out for you using a professional solution with high durability and high transfer speed.

### PRODUCT PROPERTIES

- Cable channel with sockets
- Prepared for possible network and telephone connections



### WHAT WE'LL DO FOR YOU

**Along with our service partner FIRMADAT s.r.o. and in cooperation with you, we will prepare a special solution according to your requirements:**

- Consulting services directly on site
- Concept
- Installation
- Upon request: network and telephone connection (regular)
- Upon request: service

### PLUS POINTS

- + Professional solution**
- Fast installation
- Green IT
- Certified solution
- Upon request: service for the time of duration of the connection
- + Reliable planning**
- High durability
- Guaranteed transfer speed



# SPECIAL EQUIPMENT AND TECHNICAL ACCESSORIES

We are also offering a rich selection of technical equipment: air-conditioning, communication or office technology including PCs and printers – the hire programme of ALGECO is prepared to fulfil all your wishes.

## AIR-CONDITIONING TECHNOLOGY

Depending on your requirements and financial possibilities, the window air-conditioning or highly powerful splitting technology will secure a pleasant climate in the room.



### Window air-conditioning

Budget-priced option for cooling of an individual office with short to medium durability.



### Split air-conditioning

Highly powerful option of cooling or heating for various room sizes and use with medium to long durability.

### We distinguish two variants in portable air-conditioning devices with short and medium durability:

- Air-conditioning device with 1 hose: Budget-priced cooling option for individual offices, cooling performance ca 2.10 kW
- Portable air-conditioning device with 2 hoses: Powerful cooling option for individual offices, cooling performance ca 2.35 kW

### Thanks to two splitting air-conditioning series, we are offering devices suitable for furnishing of individual, double and large offices with medium and long durability:

- Construction series 9 for one module: cooling performance ca 2.64 kW, heating performance ca 3.22 kW
- Construction series 12 for a doubled system: cooling performance ca 3.52 kW, heating performance ca 3.81 kW

## COMMUNICATION OR OFFICE TECHNOLOGY



### Multifunctional devices

23 pages per minute, black and white and in colour, network printing and scanning, 40 GB hard drive, lower cupboard, service included



### VoIP telephone

VoIP telephone with an internet browser, contact registers, calling records and customizable user settings

## PCS AND PROJECTORS

For higher work comfort of your leading workers, you can use the possibility of a PC or projector hire.



- PC in configuration suitable for daily office work with documents, post, the internet
- Quality projectors with good luminosity and excellent visual display
- Portable screen is a matter of course

## CAMERA AND SECURITY SYSTEMS



Camera and security systems are a part of the protection of your property. The system can contain not only a camera system for record keeping of the movement of persons, but also movement detectors, smoke detectors, detectors of broken glass, etc. If the alarm sets off, the main station is alerted and it can, for example, send an SMS message or call to a pre-defined phone number and play a message.

Detectors may be connected wirelessly, which makes their assembly easier..

## ECO-FUTURE

The ECO-FUTURE programme consists of a whole number of ecological solutions for water and energy saving: for example, door closers, movement detectors and thermostats for residential modules, flow heaters, flow limitation and self-closing batteries in the sanitation area or renewable heating systems.



Thermostat



Electric hand dryer



Flow heater

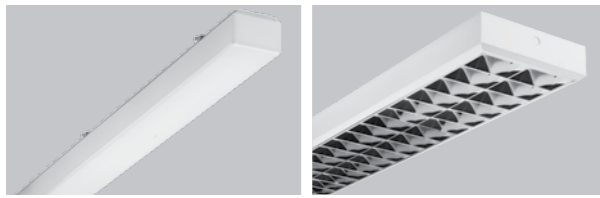
“ OPTIMAL ROOM CLIMATE BY PRESSING ONE BUTTON ”



# SPECIAL FURNISHING AND TECHNICAL ACCESSORIES

Lighting plays a major role especially on workplaces with computer monitors. We let you decide, whether you are going to need various lights which differ from the standard and whether we may fit your building with accessories such as an outdoor light and emergency or escape lighting.

## IN INDOOR LIGHTING

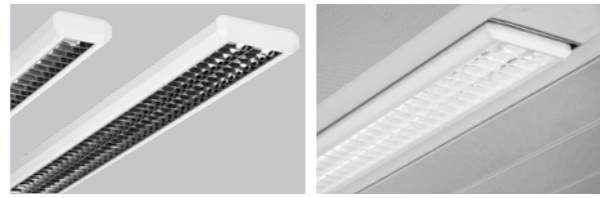


**IN Standard light**

**IN Special light**

Fluorescent ceiling light for workplaces with monitors with an electronic ballast, double parabolic grid, dark light, 60°

## ADVANCE PLUS / PROGRESS INDOOR LIGHTING



**ADVANCE PLUS Standard light**

Fluorescent ceiling light for workplaces with monitors with an electronic ballast, multi lamp, double parabolic grid, dark light, 60°; 2 x 54 W, alternatively 2 x 28 W

**PROGRESS Standard light**

Fluorescent ceiling light for workplaces with monitors with an electronic ballast, multi lamp, double parabolic grid, dark light, 60°; 2 x 54 W, alternatively 2 x 28 W

## SPECIAL LIGHTING (OUTDOOR)

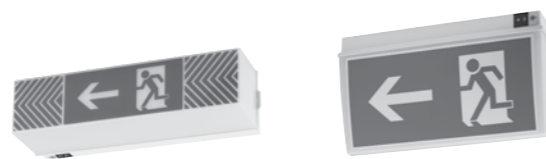


**Outdoor lighting**

**Outdoor lighting**

usually combined with a movement detector

## SPECIAL LIGHTING (EMERGENCY ROUTES)



**Escape light**

Emergency lighting with an individual battery

**Escape light**

Emergency lighting with an individual LED battery



“ LIGHT HAS A SIGNIFICANT EFFECT ON  
RELAXED WORK ATMOSPHERE. ”

# SAFETY

“ SAFETY FIRST. ”



## WE CARE ABOUT YOUR SAFETY

Together with you and according to your requirements, we are going to prepare an individual security concept for your building:

- Fire protection
- Devices for protection against lightning and excess voltage
- Fire detectors and alarm technology
- Security cameras
- Access control
- Plan of escape routes
- Fire extinguishers
- Building insurance

**Upon handover of the building, we are going to instruct you on the matter of security systems. Naturally, we will take care of their repairs and maintenance for you.**

**After termination of the lease, we guarantee ecological disassembly of these devices using recycling of system elements.**



## AUTHENTICATED AND CERTIFIED

Owing to its leading position on the market, ALGECO co-establishes measures of continuity, quality, security and services. Our residential modules are well-proven concerning their quality and emissions of harmful substances.

Constant high quality of our products and services is secured by a certificate from Bureau Veritas for quality management.



The control brand of TOV-Rheinland-TOXPROOF is the proof of our products being tested for harmful emissions and of their harmlessness for the air quality.



FOR YOUR SAFETY.



# SECURITY TECHNOLOGY

Security applies to person and property protection. In this context, it is considered natural that not even in temporary constructions, we may make any compromises. The solution lies in a reliable security technology, while we differentiate between two areas: fire protection and security protection.

As a specialized company, we are well-acquainted with various requirements for security technology in the case of temporary solutions and in traditional buildings. Same as in the area of network technology, even here, modular solution using cable connections with ready-made sockets for flexible use is suitable.

## OUR FIRE PROTECTION PRODUCTS PORTFOLIO

### • Devices for fire detection

Basic: up to 50 detectors, max. 30 monitored rooms, without a connection to a fire brigade

Standard: up to 1200 detectors including connection to a fire brigade, for the highest requirements

- Alarm / sound distribution
- Outlet of smoke and heat
- Emergency light
- Fire extinguishing equipment
- Gas alarm system
- Fire stoppings

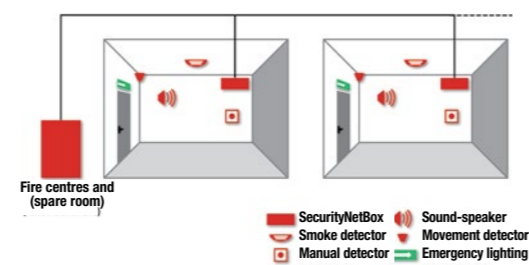
## WHAT WE'LL DO FOR YOU

**Along with our service partner and in cooperation with you, we will prepare a special solution which will be according to your requirements:**

- Consulting services directly on site
- Concept
- Installation
- Briefing/training
- Upon request: certification in accordance with the VdS directives
- Service guaranteed directly on site within 48 hours
- Repairs and maintenance

## OUR SECURITY PRODUCTS PORTFOLIO

- Guarding alarm technology
- Entry control
- Security cameras
- Emergency technology



## PLUS POINTS

### + Product and security

- Certified partners (ISO and TOV) for devices of fire and break-in detection
- System solution by pressing one button for fast installation
- High security against failures and breakdowns
- Guaranteed service directly on site within 48 hours
- Repairs and maintenance

### + Reliable planning

- System solutions from one provider

# AGREEMENT ON LIMITATION OF LIABILITY FOR DAMAGES

In course of the lease of mobile containers, various unpleasant situations may occur, such as damage, stealing or other harmful event. By signing the General terms and conditions, the client binds themselves to return the object of the lease as it were at the moment of takeover. If things were to the contrary, ALGECO is obligated to charge costs connected with removal of damages and with putting the object of the lease into its original state. Costs of procurement of one container range between 100 000 to 150 000 CZK without VAT, in case of sanitation containers, the amount is up to 250 000 CZK + VAT. The ALGECO company is offering you an additional service, Agreement on limitation of liability for damages on leased containers and furnishing. By conclusion of this agreement, you will get rid of any issues related to the solution of unpleasant situations such as a break-in, fire, natural disasters, etc.

## LIMITATION OF LIABILITY INCLUDES:

- Mechanical damage (for instance, damage caused by a vehicle during unloading / loading)
- Theft of a container, break-in (does not apply to items not owned by the ALGECO company)
- Extreme weather (hail, flood, lightning, frost, etc.)
- Fire, electronic short circuit

## ADVANTAGES OF OUR PROPOSAL:

- Low monthly fee
- Limitation of impacts of damage management
- Simple liquidation of a harmful event

**With respect to your needs, we have prepared three versions of liability for damages:**

## VER. 1 - STANDARD (DEFAULT SETTINGS IF NO OTHER OPTION IS SELECTED)

- The lessee limits their contribution to maximum 5 000 CZK + VAT (damage exceeding the above stated amount will be paid by the Algeco company themselves).
- Monthly fee for one residential / storage container is 200 CZK/month + VAT.
- Monthly fee for one sanitation container is 300 CZK/ month + VAT.

## VER. 2 - STANDARD PLUS

- The lessee limits their contribution to the maximum of 15 000 + VAT (damage exceeding the amount stated will be paid by the Algeco company themselves).
- Monthly fee for one residential / storage container is 160 CZK + VAT.
- Monthly fee for one sanitation container is: 250 CZK + VAT.

## VER. 3 - FULL LIABILITY

- The lessee is fully liable for any damages incurred in the course of the lease. Within seven working days since the return of the container from the lease, an inspection of the object of the lease will be carried out and in the case of any damage, the operational department of the Algeco company will prepare an estimate, based on which an invoice will be issued for the necessary repairs.



“ EVEN TERRIBLE THINGS MAY HAPPEN ”

# CUSTOMER SERVICE



“ AND AFTER THE HANDOVER OF THE BUILDING ”

## FACILITY MANAGEMENT

Along with infrastructure of construction sites and construction projects, we are also offering extensive services concerning paperwork and administration of your building.

Cleaning services are also required frequently, as well as housekeeping works and in larger companies, lessor administration.

FOR A COMFORTABLE PROJECT EXECUTION WITHOUT ANY STRESS.



## CATERING SERVICE

Vending machines with refreshment, suitable both for indoor and outdoor use, are a quick and simple solution when it comes to the matter of food selection. Offer a wide range of snacks and beverages to your colleagues and visitors for tasty and quick refreshment directly on site.

Apart from specialities from the offer of hot beverages in a premium quality and refreshing cold beverages, the vending machines can also be filled with small snacks.

- All hot beverages are freshly brewed
- Simple operation
- Catering service

COLOURFUL AND COMFORTABLE NONSTOP REFRESHMENT! FOR SATISFIED EMPLOYEES AND VISITORS.



# FACILITY MANAGEMENT

## BUILDING ADMINISTRATION

If you're planning a larger system of containers for various lessors, for instance, for external companies on your premises or for construction supply companies, we will take care of the building administration including housekeeping works, maintenance and cleaning services or lessor administration.

## CLEANING SERVICES

Cleaning of the building is a small, but an important part of the service, especially in places where you don't wish to connect your temporary construction to the already existing structures. Every building administration has to deal with this essential topic at one point. Thanks to our suitable partners and republic-wide contact network, we will be happy to support you in this area.

## OUR CLEANING SERVICES PORTFOLIO

### Contains all typical cleaning work:

- Floor cleaning (vacuum cleaning, mopping)
- Surface cleaning (furniture, window sills)
- Other surfaces (doors, heating)
- In sanitation areas: tiling, mirrors, sanitation devices
- Emptying of litter bins

### Emptying of litter bins

- Re-filling of expendable material (handtowels, toilet paper and soap dispensers)
- Window cleaning and special cleaning
- Garden works and landscaping

**It is a matter of course that cleaning shifts will be arranged with you and according to your requirements.**

# VENDING MACHINES FOR REFRESHMENT

For every day, fresh and reliable supply of beverages and snacks in a premium quality.

## VENDING MACHINES FOR HOT BEVERAGES



**CAMACENTO Piccola**  
for coffee specialities from ground bean coffee



**CAMACENTO Grande**  
with a system for freshly steamed coffee specialities and tea

## COMBINED VENDING MACHINE FOR COLD BEVERAGES



**Combined vending machine**  
for snacks and cold beverages



**Automatic vending machine for cold beverages**  
for six different cold beverages

“ BASIC NEEDS SATISFIED QUICK AND CLEAN. ”

# OUR SERVICE PARTNERS



NATURALLY, WE WILL PLAN YOUR CONSTRUCTION PROJECT INDIVIDUALLY ACCORDING TO YOUR REQUIREMENTS, OR ACCORDING TO THE NEEDS OF YOUR PROJECT. YOU DECIDE ON THE GRADE OF CONSTRUCTION AND ON YOUR CONCEPT OF TAILOR MADE SERVICES! WE WILL BE HAPPY TO DISCUSS EVERYTHING WITH YOU IN PERSON.

## HAND IN HAND WITH OUR SERVICE PARTNERS

we are offering concepts of tailor made services from one provider!

### Your plus points:

- + Coordinated project schedule
- + Modular systems for greater flexibility
- + No investments in the course of the lease
- + Full control of costs owing to total costs calculation



FOR A COMFORTABLE AND CAREFREE PROJECT EXECUTION.



ARE YOU MISSING SOMETHING? THEN DO NOT HESITATE TO CONTACT US. OUR AIM IS TO NOT LEAVE ANY WISHES IN THE SERVICING AREA UNFULFILLED. WE WILL BE HAPPY TO DRAW UP AN INDIVIDUAL CONCEPT OF SERVICES ACCORDING TO YOUR REQUIREMENTS.

## OUR OBLIGATION IS TO PROVIDE QUALITY PRODUCTS

- The highest quality and safety and technology norms, for instance, from the viewpoint of fire protection and sound isolation
- Construction material with low emissions of harmful substances
- Safe and ecological working methods in a healthy working environment
- Environmental friendliness



These materials are assembled according to the best awareness and they correspond to the current state of knowledge. However, ALGECO does not take over any liability for their correctness and entirety. All the texts are protected by copyright law and they may not be, not even as excerpts, used without the consent from the ALGECO company. Above all, this document may not be reproduced, distributed or published or electronically stored and sent out.

Flexible space solutions and modular buildings.



# FLEXIBLE SPACES AND MODULAR CONSTRUCTIONS



## PRAHA

Bečovská 939  
104 00 Praha 10-Uhřetěves  
tel. +420 272 019 791  
fax +420 272 019 799  
praha.cz@as.algeco.com

## SPYTIHNĚV

Olšík 586  
763 64 Spytihněv  
tel. +420 577 113 030  
fax +420 577 113 031  
spytihnev.cz@as.algeco.com

## PREŠOV

Jesenná ul.  
080 01 Prešov  
tel. +421 517 582 208  
fax +421 517 582 209  
presov.sk@as.algeco.com

## BRNO

Průmyslová zóna Brno-Chrlice  
ulice Tovární 13  
643 00 Brno-Chrlice  
tel. +420 737 203 261  
brno.cz@as.algeco.com

## STARÉ MĚSTO

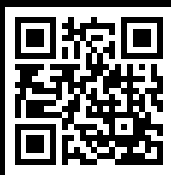
Brněnská 703  
686 03 Staré Město  
tel. +420 572 520 861  
fax +420 572 520 860  
info.cz@as.algeco.com

## TRNAVA

Sereďská 247/4012  
917 05 Trnava-Modranka  
tel. +421 332 850 725  
fax +421 332 850 720  
trnava.sk@as.algeco.com

## OSTRAVA

Obchodně podnikatelský areál  
budova č.p. 314/52  
742 51 Mošnov  
tel. +420 733 677 887  
ostrava.cz@as.algeco.com



**ALGECO s.r.o.**

Olšík 586 · 763 64 Spytihněv  
info.cz@as.algeco.com · [www.algeco.cz](http://www.algeco.cz)



CZ +420 733 690 207  
SK +421 911 705 276

**algeco®**

An ALGECO SCOTSMAN Company