

FLEXIBLE SPACE SOLUTIONS AND MODULAR CONSTRUCTIONS



ADVANCE PLUS

OFFICES & ADMINISTRATION

SCHOOLS & KINDERGARTENS

BANKS & SAVING BANKS

EVENTS, FAIRS & EXHIBITIONS

algeco[®]

An ALGECO SCOTSMAN Company

WE PROVIDE YOU WITH COMFORT AND SPACE

In case you need extra space to carry out your plans in a short time and if you have special requirements for security, comfort and pleasant feeling in the rooms, thanks to our modular buildings we are your competent partner: **ADVANCE PLUS**, new comfortable Algeco rental system, combining a modern look with innovative technology.



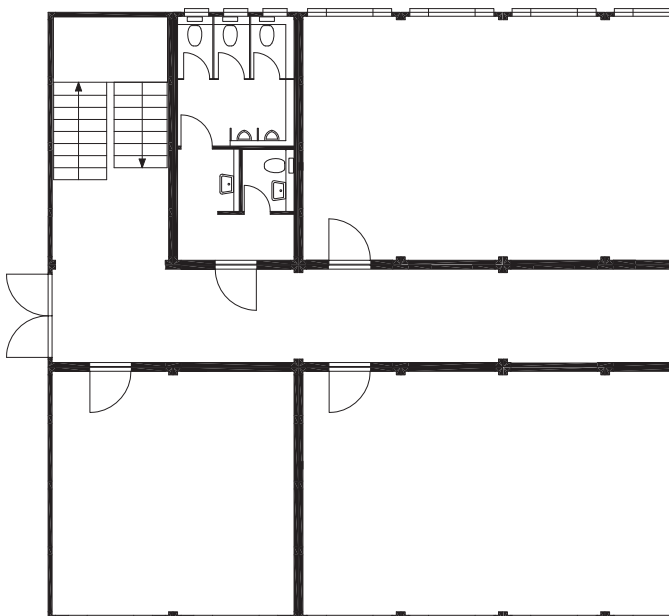
As for the design and implementation of this new series we set new standards even within the comfort class. Besides the pleasant feeling in the rooms we also offer stricter safety standards and environmental friendliness.

Especially fire protection is an essential part of security. Fire resistance ≥ 30 minutes for structural parts of the buildings and fire resistance class F30AB for walls and ceilings of corridors and stairways modules are standard for **ADVANCE PLUS** series.

The system of modular constructions is environmentally friendly and meets modern lifestyle requirements. That's why the **ADVANCE PLUS** is equipped with important water and energy saving elements even in the standard version. Additionally, you can enhance ecological value of your building using the products of our program.

ECO-FUTURE. We will be pleased to consult your particular case.

With **ADVANCE PLUS** series you can build a rental building comfortably and stress free. With our modular construction system we are able to implement sophisticated spatial solutions according to strict safety and environmental regulations at the earliest possible time whilst **providing full service 360 °. For greater safety and comfort!**



PRODUCT ADVANTAGES

OUR OFFER

+ Design

- + Outside: Modern smooth facade with windows and external electric blinds
- + Inside: elegant white, ash wood decor door with stainless steel handles, floor in dark wood decor
- + Intelligent: Systems of divisions enabling clean installation of electricity wiring, network, telephone, water and sewage in residential and sanitary modules
- + Quality: additional equipment as aluminium-glass front door, glass roofs above the entrance, stainless steel kitchenette or **ALGECO** premium range furniture to rent

FOR PLEASANT FEELING
IN THE ROOM

+ Safety

- + fire protection: Fire resistance ≥ 30 minutes for structural parts of the buildings and fire resistance class F30AB for walls and ceilings of corridors and stairways modules

FOR YOUR SAFETY

+ Environmental friendliness

- + Energy saving: Fluorescent lamps combined with photocells reacting to movement in bathrooms
- + Economical: sanitary facilities with basin batteries activated by proximity sensor, hot-water circulating tanks and electric hand dryers
- + Easy: installation of air conditioning units and thermostats using pre-installed technology

FOR OUR ENVIRONMENT





Liabilities to environment, health and Safety (EHS *)

* Environment, Health & Safety

Our market leadership obliges us to be accountable for safe and healthy working environment and regardful to vital resources. Economic prosperity is united with safe and environmentally friendly working practices in healthy work environment.

This continual process of optimization is achieved through EHS regular reviews and updates, as well as the personal commitment of our employees and management.

We prefer longtime business partners who responsibly seek to preserve environment, health and safety.

Our commitment to health and safety includes:

- Optimization of work procedures and processes that ensure safe and healthy working environment
- Regular training of our staff

Our commitment to the environment includes:

- Reduction of negative effects on the environment, reduction of waste or its proper disposal
- Using environmentally friendly equipment and materials in production
- Reuse and recycling of resources or materials for products and services



* Environment, Health & Safety

+ Universality

+ **ADVANCE PLUS:** A modern and safe solution for demanding modular construction such as office and administrative buildings, kindergartens and schools, banks and saving banks, events, fairs and exhibitions



+ Technology

+ **ADVANCE PLUS:** Convincing thanks to modern technical equipment for quick installation of air conditioning, thermostats and our **DATA-NET SERVICE**, special high-performance network and telephone equipment



FLEXIBLE TAILOR-MADE MODULAR CONSTRUCTION.



ADVANCE PLUS TECHNICAL SPECIFICATIONS

TECHNICAL DATA

MODULE FRAME DIMENSIONS

6.058 x 2.438 mm, usable area ~ 13 m² resp.

6.058 x 2.995 mm, usable area ~ 16,4 m²

Internal height: 2.500 mm External height: 2.800 mm

FIRE PROTECTION

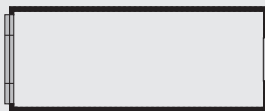
Fire resistance ≥ 30 minutes for structural parts of the buildings and fire resistance class F30AB for walls and ceilings of corridors and stairways modules

THERMAL INSULATION

Exceeding the minimum heat seal fulfillment according to DIN 4108; compliance with the minimum heat seal by EnEV * 2009 (* Regulation on Energy Savings) during the rental period up to 24 months

Thickness of insulation (mineral wool): wall: 80 mm, floor: 100 mm Roof: 80 mm

GROUND PLANS



Residential container AP26

6.058 x 2.438 x 2.800 mm

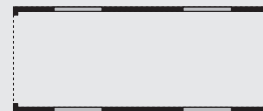
- Internal height: 2.500 mm
- Usable area: ~ 13 m²
- Electrical heating
- Linkable
- Flexible customization of the space in the halls and buildings individual ground plans



Corridor container AP-FT25

4.896 x 2.438 x 2.800 mm

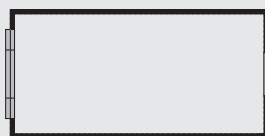
- Internal height: 2.500 mm
- Usable area: ~ 11 m²



Corridor container AP-FT26

6.010 x 2.438 x 2.800 mm

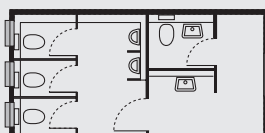
- Internal height: 2.500 mm
- Usable area: ~ 13 m²



Residential container AP36

6.058 x 2.995 x 2.800 mm

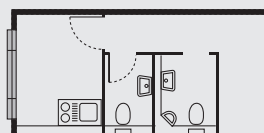
- Internal height: 2.500 mm
- Usable area: ~ 16,4 m²
- Electrical heating
- Linkable
- Flexible customization of the space in the halls and buildings individual ground plans



Sanitary container AP-S1

6.058 x 2.995 x 2.800 mm

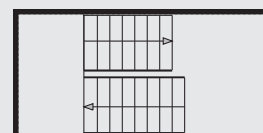
- Internal height: 2.500 mm
- 4 WC cabins, 2 urinals, 2 basins with batteries activated by proximity sensor
- Electrical heating, 2 hot-water circulating tanks, 2 electrical hand dryers
- Floor covering R10
- For up to 50 people



WC container ladies / gentlemen AP-S2

6.058 x 2.995 x 2.800 mm

- Internal height: 2.500 mm
- 2 WC cabins, 1 urinal, 2 basins with batteries activated by proximity sensor
- optional kitchenette-charged additionally
- Electrical heating, 2 hot-water circulating tanks, 2 electric hand dryers
- Floor covering R10
- For up to 20 people



Staircase container AP-TT36

6.058 x 2.995 x 2.800 mm

- Internal height: 2.500 mm
- Electrical heating
- Internal staircase
- stairhead stairs
- Optionally available also external stairs and open stair towers

In case you have special requirements for safety, comfort and pleasant feeling in rooms we will be pleased to design modular constructions using **ADVANCE PLUS**. We will prepare an individual building design according to your specifications and project needs.



OUR PRODUCT REQUIREMENTS

- Highest quality and safety technical standards, eg. Regarding fire protection and sound insulation
- No harmful substances
- Safe and environmentally acceptable working practices in healthy work environment
- Regardful usage of vital resources

These documents have been designed according to the best knowledge and correspond to the current state of knowledge. However, ALGECO is not liable for their completeness and accuracy. All texts are copyright protected and may not be used without the consent of ALGECO. This document also may not be reproduced, distributed, publicly quoted or electronically stored and distributed.

We live spaces

FLEXIBLE SPACE SOLUTIONS AND MODULAR CONSTRUCTIONS

DEALERSHIP:

Czech Republic Praha • Brno • Ostrava • Spytihněv • Staré Město
Slovakia Trnava • Prešov

Algeco s.r.o.

Olišík 586 • 763 64 Spytihn v

Info.cz@as.algeco.com • www.algeco.cz

 **cz: +420 733 690 207**

 **sk: +421 911 705 276**

algeco[®]

An ALGECO SCOTSMAN Company